



DELIVERABLE D2.2

Website

Emp-H

“Empowering Hospital”

GA n. 664258



Co-funded by
the Health Programme
of the European Union



PROJECT ACRONYM:	Emp-H
CONTRACT NUMBER:	664258
DISSEMINATION LEVEL:	Public
NATURE OF DOCUMENT:	Report
AUTHORS (name and organization):	Ylenia Sacco (ASL Biella)

TITLE OF DOCUMENT:	Emp-H website
REFERENCE NUMBER:	D2.2
WORKPACKAGE CONTRIBUTION TO THE DOCUMENT:	WP2
EXPECTED DELIVERY DATE:	31st July 2015

Short description of the Deliverable
This deliverable concerns the setting up of the public website for dissemination of the project. The website was designed and built by a Italian communication and graphic design agency in close collaboration with the WP2 leader and coordinator ASL Biella. During the project lifetime, the website will be the main communication channel from the project to all stakeholders, internal as well as external.

REVISION HISTORY			
REVISION	DATE	COMMENTS	AUTHOR (name and organisation)
V1	23/07/2015	Delivered to all partners for comments	Ylenia Sacco (ASL Biella)





EXECUTIVE SUMMARY

This deliverable concerns the setting up of the public website for dissemination of the project. The website was designed and built by the Italian communication and graphic design agency, Orso Blu of Biella, in close collaboration with the WP2 leader and coordinator ASL Biella.

In this deliverable, the objectives and structure of the website are presented in line with the description provided in D2.1 Dissemination Plan.

During the project lifetime, the website will be the main communication channel from the project to all stakeholders, internal as well as external, and be regularly updated with news and results from the project.

Summary

EXECUTIVE SUMMARY	3
1. INTRODUCTION	4
1.1 Purpose of the Dissemination plan	4
2. The Emp-H website.....	4
2.2 Structure	4
Appendix A: Emp-H website screenshots.....	5



1. INTRODUCTION

1.1 Purpose of the Dissemination plan

This report describes the Emp-H website.

2. The Emp-H website

The main objective of the Emp-H website is to disseminate facts and news about the project, along with the project's progress and results as they are obtained.

The website provides contact details for all project partners in order to facilitate knowledge sharing and collaboration within and beyond the project Consortium.

2.2 Structure

The structure of the website reflects its objectives, and consists of the following:

- Home page showing the logo, the project's full name, a list of news from the project, and the partners. The home page changes and adapts to the content of the website as it is filled with more information, e.g. videos and other media. ☒
- The page "About" provides about the Key persons involved in the project.
- The page "Project" provides an overall description of the project supplemented by information showing key events, activities description and expected results.
- The "news" page provides a list of news from the project. When clicked, each of the news items shows a short description as well as a link to the partners directly linked to the specific topic.
- The page "Partners" shows a description of the Project Consortium and of each partner involved in the project.
- The page "Evidence" will be used to gather information (e.g. papers, events, websites, etc.) relevant to the project and its stakeholders.
- The "Contacts page" contains contact information about the project coordinator, project manager and Coordinator support Team.

The website structure has been designed so as to make browsing simple and user-friendly, while the interactive elements give the website a living and dynamic feel. All the contents of the site are organised in a general horizontal menu at the top of every page, from which it is possible to access the specific sections. During site life, the content of the website will be regularly updated and the number of pages could increase.

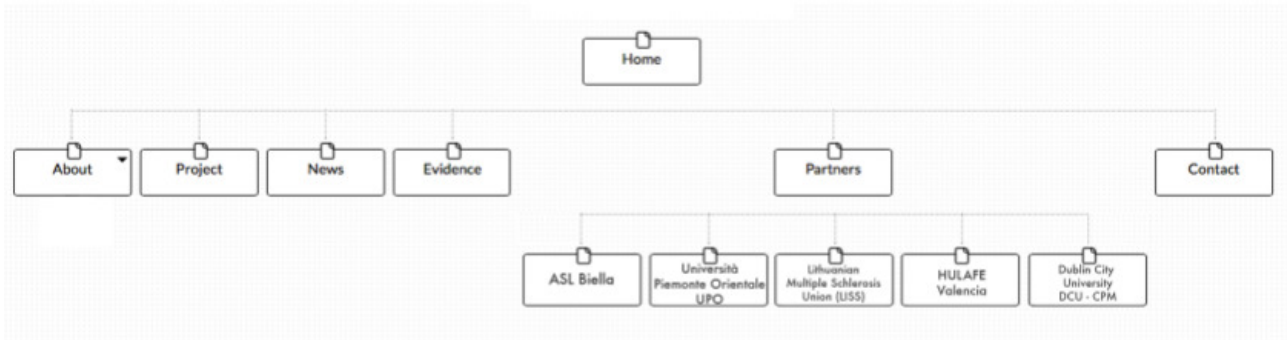
A schematic of the structure is shown in Figure 1 below.





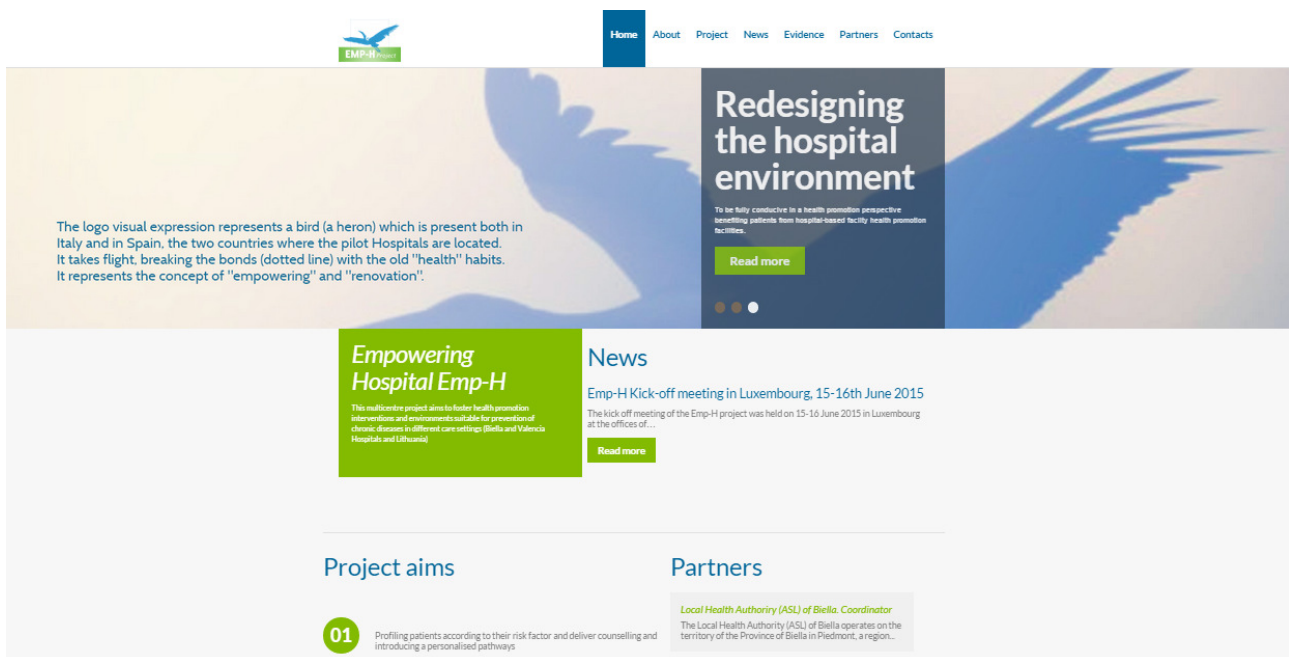
Figure 1: Emp-H website structure

<http://www.emp-h-project.eu>



Appendix A: Emp-H website screenshots

<http://www.emp-h-project.eu>



Co-funded by
the Health Programme
of the European Union



01 Profiling patients according to their risk factor and deliver counselling and introducing a personalised pathways

02 Engagement of patients in interactive workshops aiming at monitoring and changing their risk factors

03 Redesigning the hospital environment to be fully conducive in a health promotion perspective (e.g. introduction of healthy food at the hospital canteen and cafeteria) according with the available evidence

04 Creating strong liaisons with the hospital catchment area, useful to provide and maintain a suitable environment for a permanent healthy behavioural changes among patients (within and outside the hospital)

05 Designing and availability of the protocol and reports encourage the development of hospitals embracing a comprehensive and effective health promotion approach

Local Health Authority (ASL) of Biella, Coordinator
The Local Health Authority (ASL) of Biella operates on the territory of the Province of Biella in Piedmont, a region...

Fundacion para la Investigacion del Hospital Universitario la Fe de Valencia – HULAFE
LA FE is an interdisciplinary research team between two of the major research entities of the region of Valencia: the Technical...

Università del Piemonte Orientale – UPO
The Università del Piemonte Orientale (in short, UPO) is a young and dynamic university located in Novara, Italy, at a short distance...

Centre for Preventive Medicine – Dublin City University – DCU CPM
DCU has been consistently ranked among the best 100 young universities in the world. DCU has community engagement as strategic priority...

Lithuanian Multiple Sclerosis Union (LMSU)
Lithuanian Multiple Sclerosis Union (LMSU), is a member of the European MS Platform, European MS Federation and member of Eurocarer association...

About Us

The Emp-H Consortium brings together a selection of partners particularly addressed to lead the way towards fostering health promotion interventions and environments in hospital settings.

[Read more](#)

This website is part of the project '664258 / Emp-H' which has received funding from the European Union's Health Programme (2014-2020)

 Co-funded by the Health Programme of the European Union



Co-funded by
the Health Programme
of the European Union